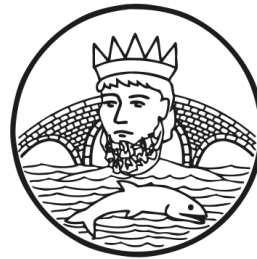




BIG OUTDOORS BIG PROJECT



King Athelstan Primary School

Our journey so far



King Athelstan Primary School



Here at King Athelstan Primary School we are on an incredible journey. We 'dream big'.

January 2018

Consultation with children and staff to inform the design brief



July 2019

After fundraising for 4 years, the Multi Use Games Area was the first area to be created



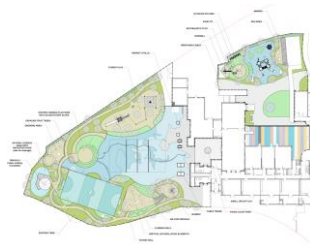
September 2020

The brand new area was ready just in time for our children returning from COVID lockdown



Next step

Attention now turns to fundraising for KS1 outdoor environment



November 2018

Designs finalised by Landscape architects 'Outerspace'



June 2020

Work began on the KS2 playground



April 2021

Team of parent volunteers created growing allotment area for the children



Next phase

To create a new space for our younger children

Phase 1



King Athelstan Primary School



Key Stage 2 Playground: The transformation



Phase 1



King Athelstan Primary School



Key Stage 2 Playground: The transformation



Phase 1 Key Stage 2 Playground



King Athelstan Primary School



The transformation so far

KS2 Playground Before		KS2 Playground After	
 <p>Outdated trim trail and poor surfacing</p>	 <p>Sports field – unusable during wet winter months</p>	 <p>New challenging climbing area and resurfaced playground</p>	 <p>New all-weather Multi Use Games Area to promote fitness and well-being</p>
 <p>Flat, uninspiring playground with tired equipment</p>	 <p>Underutilised space</p>	 <p>Landscaping to create inspiring spaces and adventurous 'mountain' for children to explore</p>	 <p>Maximising use of space with creation of 'Daily mile' running track</p>



Key Stage 1 Playground: The next step

Aim: to create an inspiring space to enthuse and nurture our children.

We want children to have the chance to learn, play and thrive in a safe outdoor space. Their well-being and physical and emotional development, we believe, being the key to successful learning within our themed curriculum.

Phase 2



King Athelstan Primary School



Key Stage 1 Playground: The next step



Phase 2

Key Stage 1 Playground: The next step



King Athelstan Primary School

BIG OUTDOORS
PROJECT

KING ATHELSTAN PRIMARY SCHOOL

PROPOSED PLAY AREA



Mark Making Water Wall

2 x Log Planter Boxes + 1 x Jumbo Bench

Many Uses! with Green/Blue Roof

Mallory Young Explorer with Poly Slide

Railroad Burma Bridge + 2 x Mounds

San Juan Columbus Galleon

5 x Movement Mats with

Slipper Sticks and Stages

Messy Kitchen

Physical Development Blocks

2 x Mark Making Boards

- Movable

Dry Wax and Chalkboard

4m Half Pavilion

2m x 1.2m Wide Deck

Geopipe 2m x 3m

Octagonal Stone

Total Decking Surfacing
Perimeter = 110.6m
Area = 510.4sqm
Including 107.0sqm of Blue River Thone
and 38m² of Light Green Duratone
+ 137.2m² of Drapery
18.2m of Monkey Perching
Including 1 x Gate



San Juan Columbus Galleon



Messy Kitchen



Jumbo Bench



Moving



Physical Development Blocks



Play Robin



log Planter Box



Drawing No: NMQ5160_B
Drawn By: DO 3
Scale: 1:200 @ A1
Date: 20-10-23
Page: 1 of 2

£130,000

Phase 2 Key Stage 1 Playground



King Athelstan Primary School

BIG OUTDOORS
PROJECT

There will be opportunities for

- climbing and physical development on the **climbing equipment**, skills sorely under-developed during lockdown restrictions.
- space for role-play and interaction between the children, developing social skills, as well as language acquisition provided by **fairy tale houses** and **hills, bridges and tunnels**.
- The **storytelling circle with storytelling chair** will continue to nurture our children's thirst for stories and build up crucial literacy skills.
- Experimenting with the **mud kitchen** and **interactive play area** will develop problem solving, teamwork and an eagerness to investigate.
- A **platform** for performance and drama gives children a safe space to express themselves, again improving language skills and emotional literacy.



KS1 Young Explorer + San Juan climbing equipment



King Athelstan Primary School



Inspire collaborative play and team building skills

Develop upper body strength for fine motor skills, essential for writing

Enhance mental well being

Provide space to challenge themselves and problem solve

Encourage imaginative play



Dedicated space for our Social Emotional and Mental Health (SEMH) Specialist Resource Provision (SRP)



King Athelstan Primary School

BIG OUTDOORS PROJECT

Beneficial extension to the SRP
An all-weather outdoor space and sensory garden

Outdoor learning develops awareness, confidence, communication skills and self-esteem in addition to the health benefits – both physical and mental.

Enable children additional space to regulate their emotions through the use of sensory equipment such as water and sand play, small forest/gardening area, sensory learning circuit

The social, emotional and mental health benefits essential to the holistic development of children and in particular, those accessing the SRP who have additional needs compared to their peers.

Providing additional opportunities where children from across school who are supported by SRP can enhance their sense of self and regulate their emotions.





King Athelstan Primary School



How can you help?

If you would like to make a donation please go to:

www.givey.com/bigoutdoorsproject

Match funding – find out if you can fund match any fundraising you do through the company you work for – contact the PCSA for the letter to present to your employer

Local businesses – can you help us reach out to local businesses for sponsorship?

Corporate letters – do you work for a company who would be interested in offering sponsorship?
Contact outdoorlearning@kingathelstan.rbksch.org for more details

Grant applications – do you have experience in grant applications or know of a good grant we could apply for?

Giving Machine - <https://www.thegivingmachine.co.uk/> raise money as you shop online! Easy!

Contacts:

School office: admin@kingathelstan.rbksch.org

Follow us on Twitter: @KingAthSchool

Outdoor Learning Lead: outdoorlearning@kingathelstan.rbksch.org

PCSA: kingathelstanpcsa@gmail.com

