



Early Years at King Athelstan Primary School

Welcome to Nursery



Aims of the meeting

- To get to know each other
- To develop our partnership
- To understand starting school routines
- To gain an understanding of your child's day
- To get some practical ideas of how you can help your child at home





Our EYFS Team

Nursery



Alice
(Qualified Teacher)



Barbara
(Level 6 Early Years Practitioner)



Imogen
(Level 6 Early Years Practitioner)

Reception

**KLEE CLASS
(NURSERY)**



Jade
(Qualified Teacher)

**NELSON CLASS
(RECEPTION)**



Sophie
(Qualified Teacher)

**KUSUMA CLASS
(RECEPTION)**



Cara
(Level 3 Early Years Practitioner)

Nursery Classes

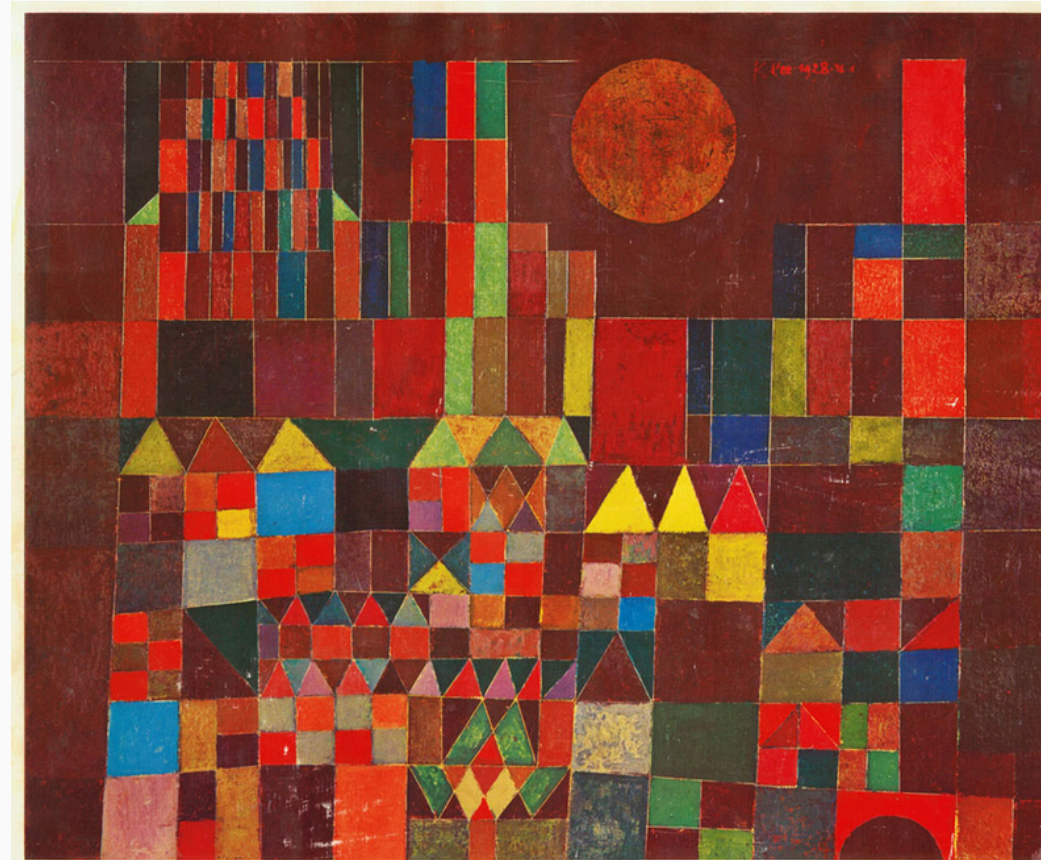


Little Klee (2 year olds)

15 and 30 hours



Alice
(Qualified Early Years
Teacher)



Barbara
(Level 6 Early Years
Practitioner)

Klee (3 & 4 year olds)

15 and 30 hours



Imogen
(Level 6 Early Years
Practitioner)

Nursery Sessions



Early Years at
King Athelstan Primary School

AM	8.30am	11.30am
PM	12.30pm	3.30pm
Full Day	8.30am	2.30 pm / 3.30pm (additional 1hr paid)



**BEST
START
IN LIFE**

To find out if you are eligible for 30 hours childcare please scan or click on the QR code



Our Learning

Planning in the Moment

Learning happens best when children are deeply engaged — our Planning in the Moment approach captures these sparks of curiosity and turns them into powerful learning experiences.



“High-quality play is considered work for young children, as it helps them understand the world, develop critical thinking, and build foundations for later academic success.” Dr Alistar Bryce-Clegg

EYFS Curriculum



We follow the Early Years Foundation Stage

It is split into 7 different areas of learning:

3 PRIME AREAS



Personal, Social and Emotional Development

Building confidence, forming relationships and understanding feelings.



Communication and Language

Developing listening, attention and understanding. Speaking and sharing our ideas.



Physical Development

Building strength, moving with control and developing healthy habits.



4 SPECIFIC AREAS



Literacy

Enjoying stories, exploring letters and sounds, and beginning to read and write.



Mathematics

Exploring numbers, patterns and shapes through fun, hands-on experiences.



Understanding the World

Discovering people, places, communities and the world around us.



Expressive Arts and Design

Exploring creativity through art, music, role play and imaginative design.



Nursery Curriculum



Our Curriculum

In our EYFS curriculum, we link 'Planning in the Moment', core texts, and common play behaviours so that children can follow their interests, explore ideas through play, and develop language and understanding in ways that feel natural, engaging, and meaningful to them.



Early Years at
King Athelstan Primary School

Our Early Years Curriculum

"We are proud of our school:
Come as you are and leave us great."



Planning in the Moment

Responsive approach that follows children's interests and engages with their play as it happens.

Core Texts

High-quality books that inspire learning, language development, and cross-curricular connections.

Common Play Behaviours

Schemas and patterns children naturally display: transporting, enclosing, rotating, connecting.

In Nursery, our curriculum is designed to be fun, engaging, and supportive, helping children to feel happy, confident, and ready to learn. We build learning around children's interests and give them lots of opportunities to explore, play, and discover.

Stay and Play Sessions

At these sessions you and your child will have the opportunity to experience the Nursery environment and ask questions before your child starts in September.

Tuesday 9th June
9.15am - 9.45am

Friday 26th June
9.15am - 9.45am

Tuesday 7th June
2.15pm - 2.45pm



Early Years at
King Athelstan Primary School



Home Visits and Starting Dates

To help children settle happily and confidently into their new class, we will have a gradual transition during the first week of school.

Your child's start date will depend on the group they have been allocated to. Further details of the groups and start dates will be shared separately.

Please note that no EYFS children will be in school on Monday 7th September, as children who are new to King Athelstan will be receiving a home visit on this day.

Home visit times are to be confirmed and will be communicated nearer the time.



ParentPay

Nursery Funds

We ask each family to contribute £10 for the whole year which will be set up via ParentPay. If you are new to the school, your login and password will be sent to you via email. This goes towards creating some amazing opportunities and experiences for your children including:

- Playdough making
- Cooking ingredients
- Food tasting food from around the world
- Planting and growing our own vegetables
- Experiments

Please also keep an eye out for our Amazon wish list and Tapestry for things we need for donation.



Early Years at
King Athelstan Primary School



ParentPay

amazon **wishlist**



Tapestry



At King Athelstan, we use Tapestry to share your child's learning journey with you in a fun and personal way. It's a secure online journal where we upload photos, videos, and little stories about what your child has been doing and achieving. You can log in anytime to see what they've been up to, leave comments, and even add your own special moments from home.

It's a lovely way to stay connected, celebrate your child's progress, and share those "wow" moments together as they grow and learn.



King Athelstan Primary School



Notes

A big thank you to Faye (office), Sarah (TA) and Jack (Teacher). The children asked some brilliant questions and were so curious (and very funny too! 🤪)

It was a lovely way to learn more about people who help our school everyday 🧡

Flags

Communication and language Understanding the world Expressive arts and design

Very Happy 😊 Curiosity 🤖 Making connections Communication 🗣️

People who help us - Police 🚔

By Sophie Jackson - Added 07 May 2026 10:17 AM



Birthdays at School

We encourage children to donate a book to their class on their birthday as this is a lovely way for the children to enjoy something that will last, and will benefit the class for the rest of the year. We do not permit bringing in cakes/treats/toys to share on birthdays. Children are welcome to wear a birthday badge.

When your child brings in a birthday book, we add a book plate at the front with their name and birthday and put on a protective cover before the book goes into their class reading corner. There is no requirement to donate a book - it is purely voluntary.



Early Years at
King Athelstan Primary School



Uniform

Please name all uniform

- Plain white school polo shirt (with or without logo)
- Black jogging bottoms
- Plain black trainers - Velcro - no laces (no coloured/white logos or soles)
- Purple school sweatshirt/cardigan with logo
- Wellies and waterproofs



Outside - Whatever the Weather

Please ensure that your child always has a suitable coat - we learn outside even when it's raining and cold. Wellies and waterproofs should be brought in to keep them dry and allows them to splash around in the rain. Sun hats should be worn in summer.



Uniform

King Athelstan School SECOND HAND UNIFORM

How do I buy?

1. Check stock via the QR code
2. email kingathelstanpcs@gmail.com with your request and (at our earliest convenience) we will leave the items with reception for you to collect

OR

1. Check stock via the QR code
2. Come to the new uniform 'Bring and Buy' sales

Stock QR.....



Bring and Buy.

First Friday of each month we will be opening the uniform 'shop'. Located at the top of the car park in the King Athelstan Centre (where KOOSA is)

Open

08:40 - 09:00

Please check stock before you come to save time

You can also drop donations of clean uniform: jumpers, trousers, cardigans, skirts/dresses, during this time (no shoes or marked items please)

Sold on a donation basis



Donation QR



Early Years at
King Athelstan Primary School

Dear **Parents**



We are delighted to be the **approved supplier of your schools official uniform.**



We pride ourselves on offering outstanding Value, Quality and a level of service rarely experienced today.

All PMG Schoolwear products are specially selected, designed and manufactured to perform in the demanding world of school uniform.

When you visit any of our stores or our website you will find that not only do we stock school uniform but everything your child needs for school days - Its Easy and Convenient !



To place your order visit www.pmg-schoolwear.co.uk or call our customer services team on **01895 809321** where a friendly and helpful service is guaranteed.



To book an appointment,
scan this QR Code



Your Uniform is available Online and at our [Chessington store](#).
Call the Store on: 0208 786 2211 or visit us at
393-395 Hook Road, Chessington, Surrey, KT9 1EL

**Guarantee cut off date is usually
around 12th August**

Other Items Needed

- Purple school book bag with logo
- Sun cream and sun hat in the summer
- Warm waterproof coat / raincoat
- Named water bottle
- Spare clothes in draw string bag to stay on their peg
- Wellies and waterproofs

No backpacks/rucksacks please



Early Years at
King Athelstan Primary School



We are a nut-free school. Please do not pack nuts in your child's lunch. This includes peanut butter and Nutella spread.



Early Years at
King Athelstan Primary School



EVERYONE IS WELCOME

- All parents/carers are automatically members
- We have class reps for each class
- Please volunteer at events
- Please join the committee if you would like to be more involved

As well as the usual cake sales, quiz and kid's discos we have introduced:

- Family raves
- Gig nights (parents and teachers played)
- Bingo
- Indie disco (adults)
- Kids' Fashion Show
- Second hand uniform sales

KS1 playground funded by the PCSA
EYFS playground to be upgraded.





The PCSA (Parent, Carer, School Association) raises additional funds to support the school where funding falls short.

We also run:

Easyfundraising - donations are made when you shop online at no extra cost to you.



School Lottery - with better odds than the National Lottery.



Early Years at
King Athelstan Primary School

Summer Circus on Saturday 27th June



Click on the poster or scan the QR code to get your tickets

Kingston Children's Centre



Early Years at
King Athelstan Primary School

Services:

- Stay and Play sessions with practical advice and support to parents/carers
- Child and family health
- Small group play sessions for families who would benefit from additional support
- Parenting courses and English as a second language (ESOL) classes with creche facilities
- Outreach sessions
- Low cost activities



Telephone: 020 8481 0640



For more info visit
our website

Thank you and welcome
to the
King Athelstan Family

See you in person
on Tuesday 9th June
9.15am - 9.45am



Early Years at
King Athelstan Primary School



Welcome to King Athelstan Primary School

Thank you for your interest in our school.

You will find everything you need to know about our school here on our website.

Our school is a two-form entry community primary school close to the centre of Kingston upon Thames. We provide education for children from 2 to 11 years in our school and offer a wide range of services and activities for 0 - 5s and their families through Kingston Town Children's Centre which is based on our site.

[Click here to read more of the Headteacher's welcome.](#)

Over the years we have developed our setting, which means we now have a vibrant, modern learning environment, with fully equipped intervention areas, spacious subject specialist rooms including: an art/cookery room, music room and library, as well as state-of-the-art KS1 and KS2 playgrounds.

Our Governing body, which oversees the school budget, has set up the School Fund as a voluntary contribution scheme to support the school which is facing substantial financial challenges. Voluntary donations can



www.kingathelstan.kingston.sch.uk/



Early Years Foundation Stage (EYFS)

Ethos and Aims

We believe that a child's experience in the Early Years will have a significant impact on their future life and that early experiences will shape their lifelong love of learning. We understand the importance of your role as a parent or carer has on your children and so we work very closely with families to provide the best possible learning experiences for them. Our Early Years Foundation Stage is made up of 2 Nursery classes, including space for 8 two year olds, and 2 Reception classes. Children at our school come from a wide range of backgrounds and we celebrate the diverse range of children and families that work together, resulting in a vibrant, inclusive, and community based school. Our Early Years team are committed to planning and delivering a stimulating broad-based curriculum that meets the needs of all our children.

The intent of our Early Years curriculum is therefore as follows:

- To ensure children feel happy and safe in our environments
- To put the emotional and mental well-being of children at the heart of all that we do
- To create a rich and varied curriculum, that is fun, memorable, challenging and that meets the needs of all children
- To maintain a strong nurturing environment that enables all children to feel successful
- To remain flexible to enable learning to be guided by a child's interests
- To develop children's independence through being inquisitive, resilient, and successful