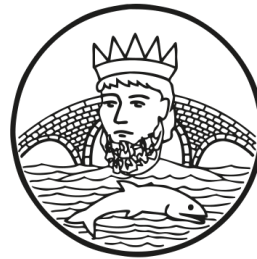




BIG OUTDOORS PROJECT



King Athelstan Primary School

Our journey so far



King Athelstan Primary School



Here at King Athelstan Primary School we are on an incredible journey. We 'dream big'.

January 2018

Consultation with children and staff to inform the design brief



July 2019

After fundraising for 4 years, the Multi Use Games Area was the first area to be created



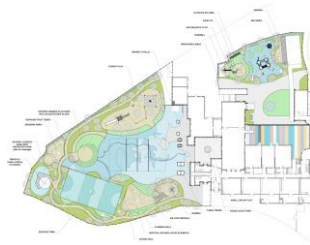
September 2020

The brand new area was ready just in time for our children returning from COVID lockdown



Next step

Attention now turns to fundraising for KS1 outdoor environment



November 2018
Designs finalised by Landscape architects 'Outerspace'



June 2020
Work began on the KS2 playground



April 2021
Team of parent volunteers created growing allotment area for the children



Next phase
To create a new space for our younger children

Phase 1



King Athelstan Primary School



Key Stage 2 Playground: The transformation



Phase 1



King Athelstan Primary School



Key Stage 2 Playground: The transformation



Phase 1 Key Stage 2 Playground



King Athelstan Primary School



The transformation so far

KS2 Playground Before		KS2 Playground After	
			
Outdated trim trail and poor surfacing	Sports field – unusable during wet winter months	New challenging climbing area and resurfaced playground	New all-weather Multi Use Games Area to promote fitness and well-being
			
Flat, uninspiring playground with tired equipment	Underutilised space	Landscaping to create inspiring spaces and adventurous 'mountain' for children to explore	Maximising use of space with creation of 'Daily mile' running track



Key Stage 1 Playground: The next step

Aim: to create an inspiring space to enthuse and nurture our children.

We want children to have the chance to learn, play and thrive in a safe outdoor space. Their well-being and physical and emotional development, we believe, being the key to successful learning within our themed curriculum.

Phase 2



King Athelstan Primary School

BIG OUTDOORS
PROJECT

Key Stage 1 Playground: The next step



Phase 2

Key Stage 1 Playground: The next step



King Athelstan Primary School

BIG OUTDOORS
PROJECT

King Athelstan Primary School
Kingston Upon Thames

£120,000



Covey design
part of

Fairy tale house



£5,000



The money raised at our Christmas Fair has paid for the Fairy tale house

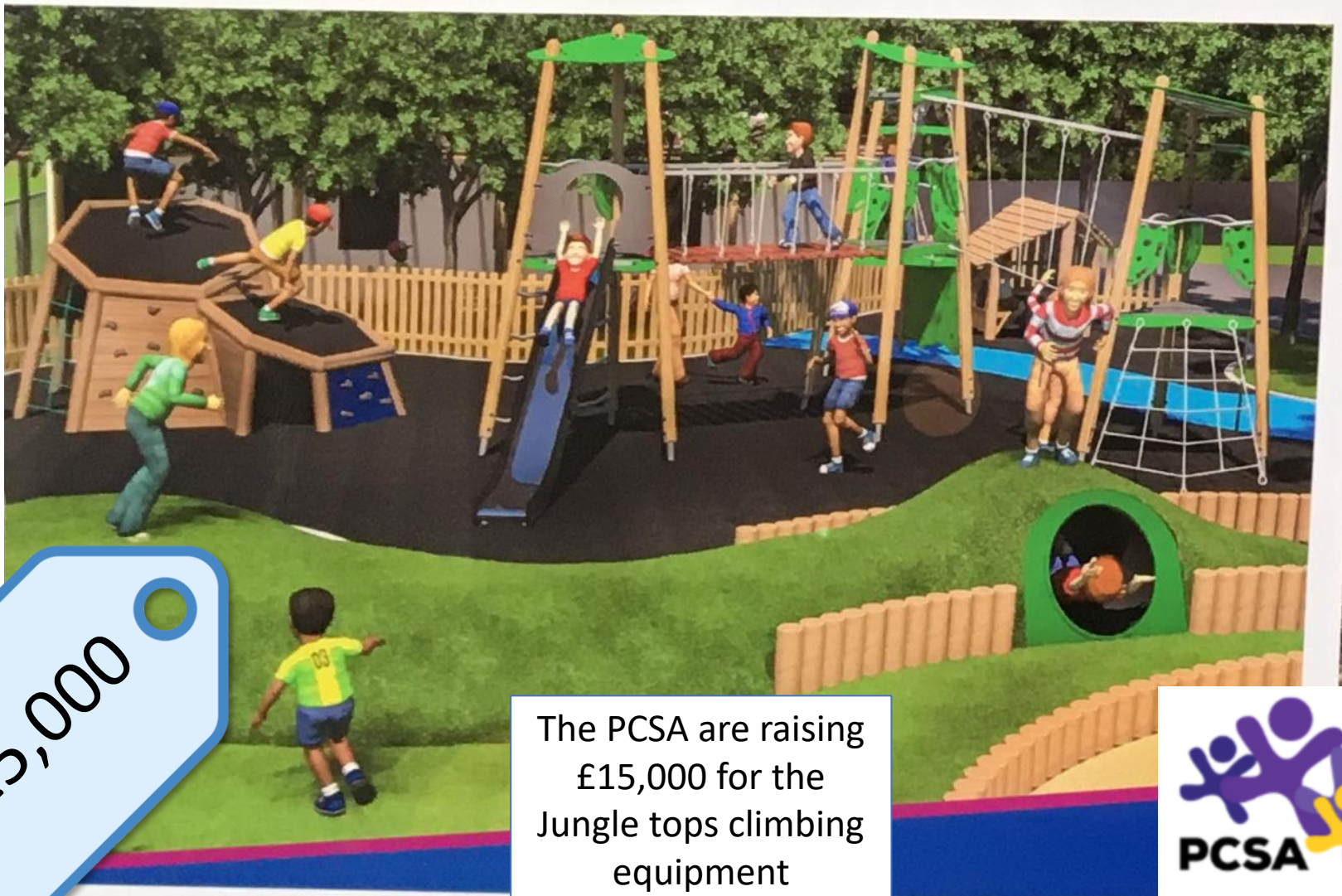
Story Telling Circle



The school leavers from 2020 donated £900 for the story telling chair

Jungle tops and climbing caves

<https://www.givey.com/bigoutdoorsproject>



£15,000

The PCSA are raising
£15,000 for the
Jungle tops climbing
equipment

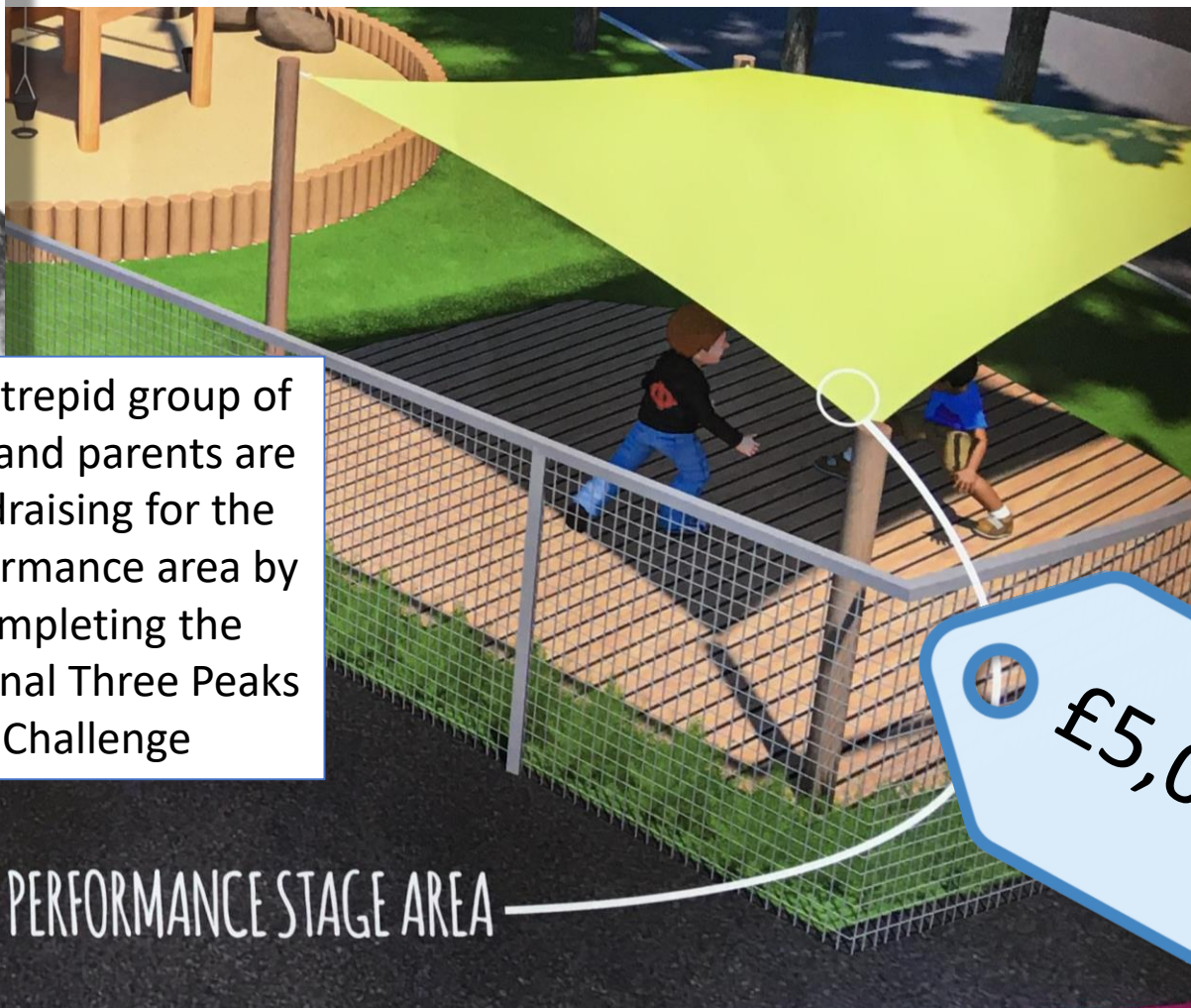


Shaded Performance Stage Area



An intrepid group of staff and parents are fundraising for the performance area by completing the National Three Peaks Challenge

SHADED PERFORMANCE STAGE AREA



£5,000

Gravel building site

Further elements of the design are to be funded by grants, donations and sponsorship.



£7,000

Phase 2 Key Stage 1 Playground



King Athelstan Primary School

BIG OUTDOORS
PROJECT

There will be opportunities for

- climbing and physical development on the **Jungletops climbing equipment**, skills sorely under-developed during lockdown restrictions.
- space for role-play and interaction between the children, developing social skills, as well as language acquisition provided by **fairy tale houses** and **climbing caves**.
- The **storytelling circle with storytelling chair** will continue to nurture our children's thirst for stories and build up crucial literacy skills.
- Experimenting with the **mud kitchen** and **gravel-building site** will develop problem solving, teamwork and an eagerness to investigate.
- A **platform** for performance and drama gives children a safe space to express themselves, again improving language skills and emotional literacy.



KS1 Jungletops climbing equipment



King Athelstan Primary School



Inspire
collaborative
play and team
building skills

Develop upper
body strength for
fine motor skills,
essential for
writing

Enhance
mental well
being

Provide space
to challenge
themselves and
problem solve

Encourage
imaginative
play



Dedicated space for our Social Emotional and Mental Health (SEMH) Specialist Resource Provision (SRP)



King Athelstan Primary School



Beneficial extension to
the SRP
An all-weather outdoor
space and sensory
garden

Outdoor learning
develops awareness,
confidence,
communication skills and
self-esteem in addition
to the health benefits –
both physical and
mental.

Enable children additional
space to regulate their
emotions through the use of
sensory equipment such as
water and sand play
small forest/gardening area,
sensory learning circuit

The social, emotional and
mental health benefits
essential to the holistic
development of children and in
particular, those accessing the
SRP who have additional needs
compared to their peers.

Providing additional
opportunities where children
from across school who are
supported by SRP can
enhance their sense of self
and regulate their emotions.





King Athelstan Primary School



How can you help?

If you would like to make a donation please go to:

www.givey.com/bigoutdoorsproject

Match funding – find out if you can fund match any fundraising you do through the company you work for – contact the PCSA for the letter to present to your employer

Local businesses – can you help us reach out to local businesses for sponsorship?

Corporate letters – do you work for a company who would be interested in offering sponsorship?
Contact outdoorlearning@kingathelstan.rbksch.org for more details

Grant applications – do you have experience in grant applications or know of a good grant we could apply for?

Giving Machine - <https://www.thegivingmachine.co.uk/> raise money as you shop online! Easy!

Contacts:

School office: admin@kingathelstan.rbksch.org

Follow us on Twitter: @KingAthSchool

Outdoor Learning Lead: outdoorlearning@kingathelstan.rbksch.org

PCSA: kingathelstanpcsa@gmail.com

