

King Athelstan Primary School

Villiers Road, Kingston Upon Thames, KT1 3AR
Tel: 020 8546 8210 Fax: 020 8547 2732

admin@kingathelstan.rbksch.org
www.kingathelstan.kingston.sch.uk



Headteacher: Emily Newton

24th January 2024

Dear Families

KS1 playground development

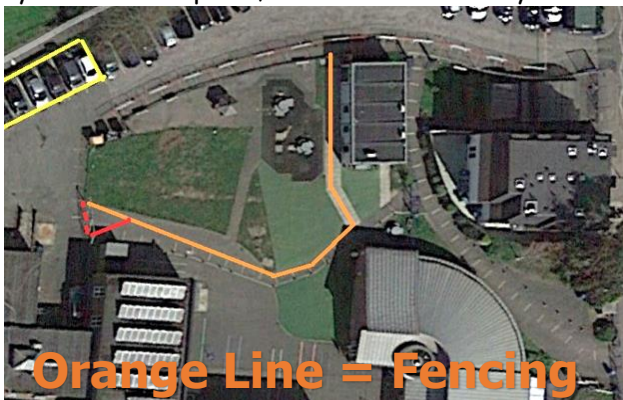
Key Information:

- Fencing will be constructed Friday 26th January and work will commence Monday 29th January
- A single file one-way system will be in place through the KS1 playground at pick up time
- Do not come back through the blue gates at pick up time
- Do not wait on site to collect Y1-6 before 3:15pm
- **Year 1 families** will collect children from the Year 1 classroom doors near the wild area at the front of the school (where Year 1 children are dropped off in the morning)
- Please can Reception families leave the area promptly so that Year 1 can collect
- If you are worried about pick up times being crowded in the KS1 playground, please collect at 3:18pm when the crowds have dispersed
- If you have any messages to pass on to teachers, please email them to admin@kingathelstan.rbksch.org, rather than stopping to talk to teachers after school
- If teachers have messages for parents and carers they will share these via phone or email

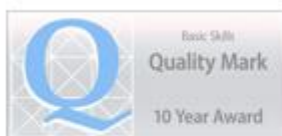
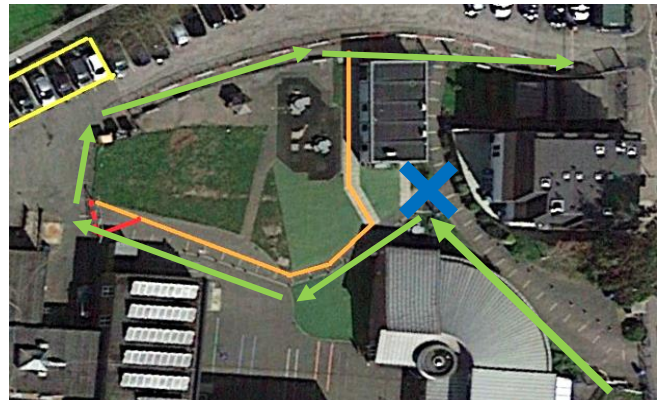
As mentioned in previous communication, on Friday 26th January fencing will be constructed in the KS1 playground and then work on the playground will commence on 29th January. We are excited about the positive changes this will bring and we would like to inform you of some temporary adjustments that will be in place during the construction period.

One-Way System:

To prevent congestion and ensure a smooth flow of traffic, we will re-enforce the one-way system through the KS1 playground blue gates by Haring and Inclusion, and through into the car park at pick up time for KS1 and KS2 families. **It is crucial that all parents and carers adhere to the designated green route below to avoid creating bottlenecks - do not come back through the blue gates identified by the blue cross below.** As you can see from the diagram, the fencing (**orange lines**) will make the space in this area restricted, so parents and carers will need to stick to **single file** to avoid blocking the way for others. Please do not come inside the school grounds before 3:15pm unless you are collecting Reception children as this restricts the area for Early Years families. If you are worried about this area being more crowded than usual, please feel free to collect at 3:18pm when the initial crowds have usually dispersed. We will review this system once in place, to ensure the safety of all families.



Orange Line = Fencing



Collection Point for Year 1:



To ease congestion in the KS1 playground at pick up times, parents and carers of Year 1 students will collect their children from the Year 1 classroom doors (next to the wild area on the way to EYFS). This will help streamline the pickup process and minimise disruptions caused by the ongoing construction work. Year 1 parents and carers with siblings in Y2 - 6 can then move around the one way system to pick up their older children once Year 1 have been collected.

Please can Reception parents and carers pick up their children and leave the area promptly so that Year 1 can collect with as little congestion as possible.

Playground Restrictions During the Day:

The KS1 playground will be restricted for use during the renovation period to ensure the safety of our pupils and to facilitate the construction process. KS1 children use the KS2 playground at break times already and additional spaces and activities will be set up to support children's lunchtimes. They will still be able to use part of the KS1 playground for games outside.

We understand that these temporary changes may cause some inconvenience, and we appreciate your understanding and cooperation as we work to improve our school environment for the benefit of all students.

At present the company are suggesting a 3-4 week schedule (1 week is half-term), however as with all construction work, timescales can change. We will make every effort to keep you updated on the progress of the playground renovation and any additional information that may affect daily routines. If you have any questions or concerns, please feel free to contact the school office.

Thank you for your cooperation and continued support in creating a safe and conducive learning environment for our children.

Kind regards,

A handwritten signature in black ink that reads "Emily Newton".

Emily Newton

Headteacher