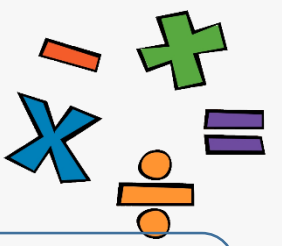


# Maths Activity

White Rose & NCETM Maths



A soup recipe uses  $\frac{3}{4}$  as many onions as carrots.  
Complete the table below.

| Carrots | Onions |
|---------|--------|
| 1       |        |
| 2       |        |
| 3       |        |
| 4       |        |
| 5       |        |
| 6       |        |

EXT: Could you write your answers as a decimal too?  
How can the number 100 help you?

Match each fraction to its decimal equivalent.

|               |                |               |               |
|---------------|----------------|---------------|---------------|
| $\frac{1}{2}$ | $\frac{4}{10}$ | $\frac{3}{4}$ | $\frac{1}{4}$ |
| 0.25          | 0.75           | 0.4           | 0.5           |

Circle the equivalent fraction to 0.25.

|               |               |                  |                  |
|---------------|---------------|------------------|------------------|
| $\frac{2}{5}$ | $\frac{5}{2}$ | $\frac{25}{100}$ | $\frac{100}{25}$ |
|---------------|---------------|------------------|------------------|

Round to the nearest whole number.

|                |      |      |
|----------------|------|------|
| $8\frac{3}{8}$ | 8.38 | 8.83 |
|----------------|------|------|

Sam says,

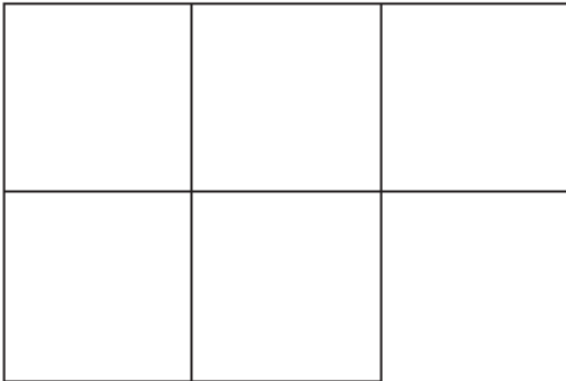
To convert a fraction to a decimal, take the numerator and put it after the decimal point.

E.g.  $\frac{21}{100} = 0.21$

Write two examples of converting fractions to decimals to prove this does not always work.



If the picture represents  $\frac{1}{3}$  of a shape, draw the whole shape.



Uh oh!!! On the next page is Mr Channing's gattegno grid! (Remember these?!) He has spilt his coffee over it... Can you help fix the grid by adding in the missing numbers?



# Gattegno Place Value Chart

|               |        |        |        |       |        |        |        |        |        |
|---------------|--------|--------|--------|-------|--------|--------|--------|--------|--------|
| ten thousands | 10 000 | 20 000 | 30 000 |       | 50 000 | 60 000 | 70 000 | 80 000 | 90 000 |
| thousands     | 1000   | 2000   | 3000   | 4000  | 5000   | 6000   | 7000   | 8000   | 9000   |
| hundreds      | 100    |        | 300    |       |        | 600    | 700    |        |        |
| tens          | 10     | 20     | 30     |       |        | 60     | 70     |        |        |
|               | 1      | 2      | 3      | 4     |        | 6      | 7      |        | 9      |
| tenths        | 0.1    |        | 0.3    | 0.4   | 0.5    | 0.6    | 0.7    | 0.8    | 0.9    |
| hundredths    | 0.01   |        | 0.03   | 0.04  | 0.05   | 0.06   | 0.07   | 0.08   | 0.09   |
|               | 0.001  | 0.002  | 0.003  | 0.004 |        | 0.006  | 0.007  | 0.008  | 0.009  |